



**East Rail Line Update**  
**Stapleton Development Corp.**  
**Jan. 22, 2015**

# Today's Agenda

- Safety
- RTD FasTracks plan
- FasTracks status
- Eagle P3 Project
- Commuter rail vehicle
- East Rail Line
- Central Park Station
- Peoria Station
- Public Information efforts
- Economic impacts
- DBE/SBE/WIN status
- Progress Photos
- Questions



*Overhead contact system (OCS) is complete near the Denver Airport Station, as well as the track work and most of the platform*

# Stay Safe Around Trains

- East Rail Line will start a year-long testing program in late spring
- Pay attention to signs, gate arms and flashing lights before crossing any train track
- Never trespass on any train track – it is illegal and can result in serious injury or death
- Commuter rail vehicles and trains always have the right of way – drivers and pedestrians must pay attention to avoid collisions
  - Trains and commuter rail vehicles cannot swerve to avoid trespassers and although they can stop, it can take up to a mile to reach a full stop



# Electrification – Commuter Rail

- Commuter rail vehicles are powered by overhead electrical lines
- The wires carry 25,000 volts of electricity and are deadly to anyone who gets too close to them
- Follow at-grade crossing safety signage and stay away from the power lines
- Do not touch, climb toward or come into any contact with the power lines

**If the wires are up, they are LIVE!**

# Quiet Zones

- In a Quiet Zone corridor, commuter rail and freight trains will not blow their horns when approaching intersections except in an emergency
- The East Rail Line and Gold Line are planned to be full Quiet Zones
- All vehicle and pedestrian crossings have safety measures in place so you'll know when a train is coming even if it doesn't blow their horn
- Always pay attention to safety signage
- Cross the tracks only at designated crosswalks when it is safe to do so



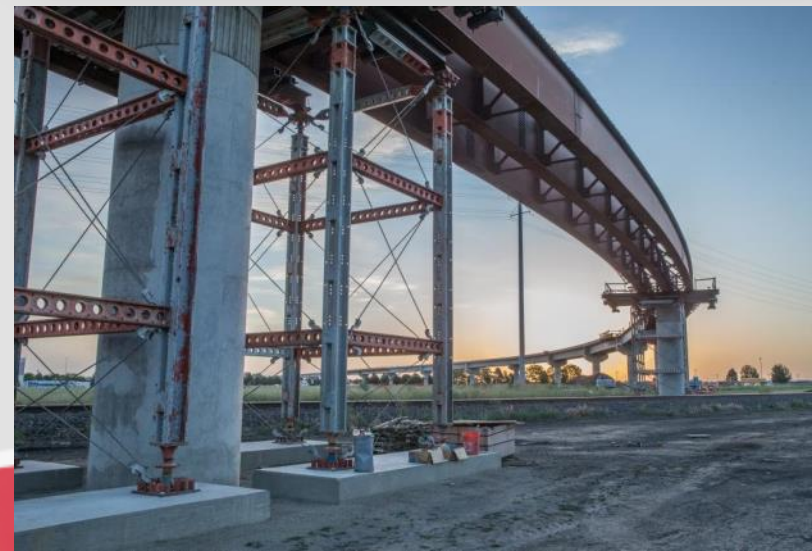
# RTD FasTracks Plan



- 122 miles of new light rail and commuter rail
- 18 miles of Bus Rapid Transit (BRT) service
- 31 new Park-n-Rides; more than 21,000 new parking spaces
- Enhanced Bus Network & Transit Hubs (FastConnects)
- Redevelopment of Denver Union Station
- 57 new rail and/or BRT stations
- Opportunities for Transit Oriented Communities

# FasTracks Status

- West Rail Line (W Line)—First FasTracks line to open—April 2013
- Denver Union Station—Bus Concourse opened May 9, service began May 11
- East/Gold/Northwest Rail Lines (EAGLE)—63% complete
- I-225 Line—31% in construction progress; 93% in design progress
- U.S. 36 BRT—Phase 1 of managed lanes 74% complete, Phase 2—34.5%
- North Metro Line—Design underway, early work to begin in fall
- Southeast Rail Extension—Advanced basic engineering complete



# Eagle P3 Project



- East Rail Line offers 35-minute travel time to DIA
- Gold Line offers 25-minute travel time to Ward Road
- Northwest Rail Westminister Segment offers 11-minute travel time to Westminster



# Eagle P3 Project Status

## Design & Construction

- Civil design work almost 100 percent complete
- Safety certification of the designs progressing well
- Construction 71 percent complete and on schedule for revenue service in 2016

## Systems

- Energizing testing from the Xcel grid complete at Argo and Sandown substations
- **Wherever you see wires up on the poles, assume power is live and STAY CLEAR!**



*Crews place ballast along the commuter rail track near the Olde Town Arvada Station*

# Commuter Rail Vehicle



- 201 passenger capacity per car (91 seated, 110 standing)
- 79 mph maximum operating speed
- 85 feet long, 10 feet wide, 15 feet tall
- Stainless steel exterior
- Two doors on each side of car
- Clear passage on each door is 50" in width
- ADA-compliant level boarding (no steps, roll-on/roll-off)
- Increased safety features
  - Positive train control
  - Vehicle monitoring systems
- Improved security with video surveillance

# Commuter Rail Vehicle

- 50 car bodies from base order and 6 option cars for North Metro delivered from Hyundai Rotem in South Korea to Philadelphia assembly plant
- Eight completed cars in Denver
- Eight more cars ready to be shipped from Philadelphia
- 10 additional car body shells now under fabrication; six for North Metro, four for Eagle
- Public unveiling and open house drew 6,500 people to Union Station in December



# Commuter Rail Vehicle

Commuter rail vehicles at Union Station, December 2014



# Commuter Rail Vehicle

Commuter rail  
maintenance  
facility,  
December 2014

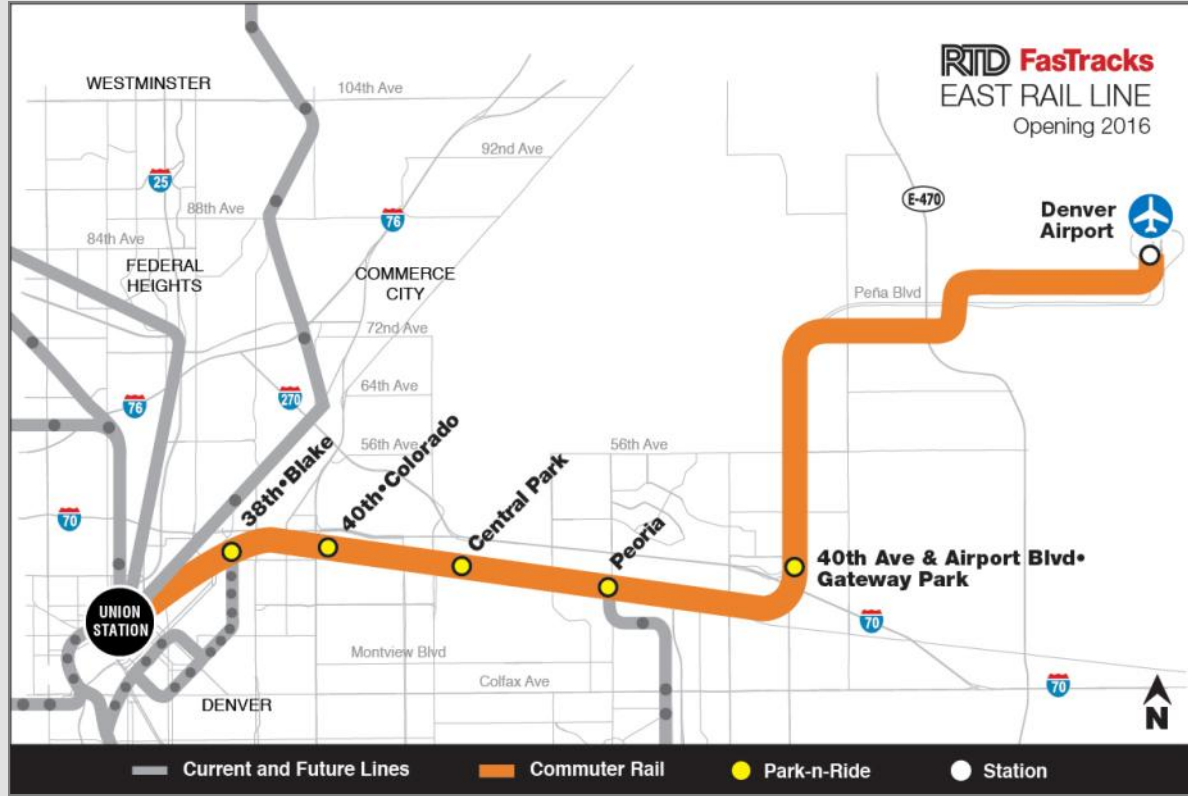


# East Rail Line



*38th/Blake Station platform looking toward downtown*

# East Rail Line



- Connects downtown Denver to DIA via Aurora
- Complete in 2016
- 22.8 miles commuter rail
- Electric Rail Cars

# East Rail Line

- Station canopies complete at Peoria, under way at 38th/Blake and Central Park
- Roadway reconstruction under way on Moline & 33rd, Albion & 40th
- Smith Road reopened to two-way traffic east of Dahlia
- Installation of glass on 38th/Blake pedestrian bridge starting soon
- Overhead wire installation moving toward Union Station platform



*Workers install canopies on the 38th/Blake Station platform*



# Central Park Station



# Central Park Station



# Central Park Station



- 1,500 parking spaces on opening day
- 14 minutes to and from Union Station.; 21 minutes to and from DIA

*The Central Park Station Platform*

# Peoria Station



# Public Information/Previous Quarter

- Project tours: 23 tours totaling 385 attendees
- Website page views: 79,801
- Stakeholder contacts: 568 personal touches via phone, email or in-person
- Printed newsletter distribution: 2,000 English, 500 Spanish
- Email newsletter distribution: 21,021
- Individual notifications by door hanger, flyer or email: 49,736
- Business impact mitigation, digital detour mapping to locate businesses



*PI team member Christina Zazueta conducts public construction tour of the Gold Line*

# Economic Impacts

Through December 2014, the project has added \$1.13 billion to the local economy:

- ✓ DTP Wages Paid \$171 million
- ✓ Equipment, services and supplies \$390 million
- ✓ Subcontractors \$569 million
- DTP currently has more than 1,600 employees, with a total of 5,857 employees working on the project to date
- DTP has subcontracted to more than 625 firms that employ crews and purchase supplies from local distributors
- DTP directly contracts with local certified Disadvantaged Business Enterprises (DBEs)/Small Business Enterprises (SBEs)



# DBE/SBE/WIN

- DTP has hired a total of 48 project employees through the RTD Workforce Initiative Now (WIN) program
- DBE/SBE commitments have exceeded goals (see chart)
- DTP has paid out \$239.4 million to disadvantaged and small design and construction firms and has contracts for remaining work that will push construction payouts over the project goals

## Disadvantaged and Small Business Enterprises

Through December

In Millions	Design DBE		Design SBE		Construction DBE		Construction SBE	
Goal	\$17.2	19%	\$3.2	19%	\$183.8	20%	\$43.7	18%
Committed	\$19.9	22%	\$7.4	44%	\$203.5	22%	\$51.3	24%
Paid	\$19.0	21%	\$7.3	43%	\$173.3	19%	\$39.9	17%
Paid % of Goal	110%		228%		94%		91%	

# Construction Progress



*View inside Westin  
Hotel structure at  
Denver Airport, above  
train station*



# Construction Progress



*Looking north toward airport station and hotel from within "X Box" commuter rail underpass*

# Construction Progress



*Looking south from exit of underpass toward Third Creek and Peña-New Castle bridges*

# Construction Progress



*View north from Peña Boulevard outbound drive, above "X Box"*

# Construction Progress



*Systems crew  
conducting inspection  
of overhead catenary  
system installation*

# Construction Progress



*56th Avenue  
commuter rail bridge,  
with OCS installation  
under way*

# Construction Progress



*40th Avenue/Airport  
Blvd • Gateway Park  
Station in Aurora*

# Construction Progress



*A track tamper at work along Smith Road, lifts the rails and settles the ballast around the concrete ties*

# Construction Progress



*Looking at track installation facing east, under new Peoria Street bridge in Aurora*



# Construction Progress



*Aerial view of new Peoria grade separation over Union Pacific and RTD East Rail Line alignments; Peoria station platform at left along tracks*

# Construction Progress



*Installation of canopies at the Central Park Station in the Stapleton neighborhood*

# Construction Progress



*Gantry flanks the tracks at Sandown Substation along the tracks east of Quebec Street, where the 25kV AC power feed will enter the catenary system*

# Construction Progress



*Track worker uses a device that lifts the rails straddling the ties and places them within the e-clips; this was taken between York and Steele streets*

# Construction Progress



*38<sup>th</sup>/Blake Station pedestrian bridge is hauled into place to be picked up by two cranes*

# Construction Progress



*38<sup>th</sup>/Blake Station pedestrian bridge in place on piers, will allow safe passage over Union Pacific yard and East Rail Line tracks from Park-n-Ride to station platform*

# Questions?



For more information on RTD's Eagle P3 Project:  
[www.rtd-fastracks.com/ep3\\_2](http://www.rtd-fastracks.com/ep3_2)